

# PS2100W

## PRESSURE SWITCH

RANGE

2 ~ 12 ...  
**100** psi

SWITCH

1 or 2  
**SPDT**

MEDIA

**Liquid  
&  
Gas**



Approvals:



IP66

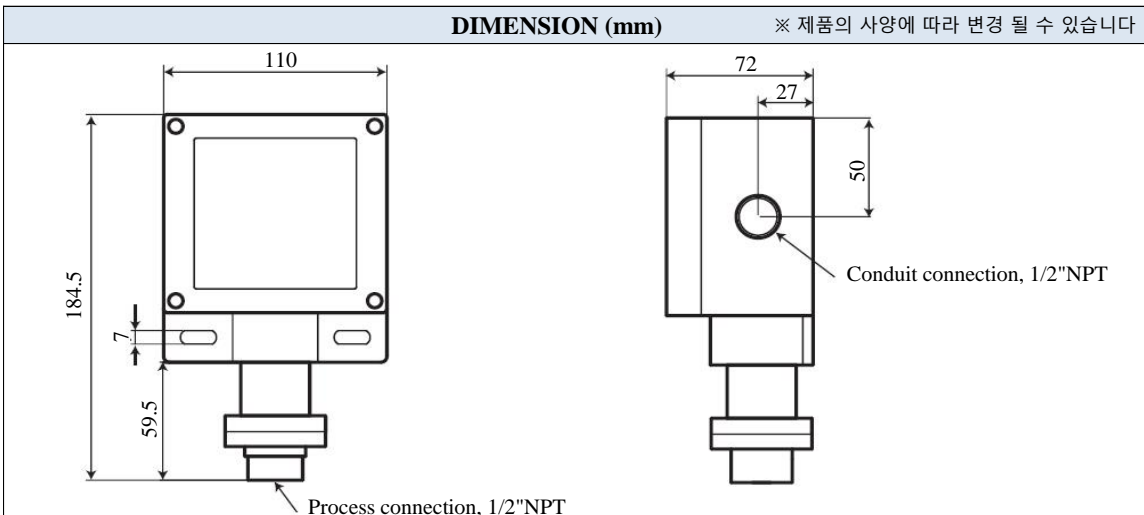
### SPECIFICATION

<b>MODEL</b>	PS2100W
<b>PROCESS CONNECTION</b>	1/4", 1/2" PT, NPT, PF Female M20 x P1.5 Female
<b>MATERIALS</b>	Housing : Die cast aluminum alloy with paint Wetted parts : 316SS
<b>PRESSURE ELEMENT</b>	Welded type diaphragm
<b>SWITCH FORM</b>	Micro Switch, One SPDT Micro Switch, Two SPDT ( one setting point ) Gold Contact, One SPDT Gold Contact, Two SPDT ( one setting point )
<b>SWITCH DATA</b>	15amps 125/250VAC, DC125V 0.4A, DC30V 3A 1A@125/250VAC ( Gold Contact )
<b>REPEATABILITY</b>	±1% of full scale
<b>CONDUIT CONNECTION</b>	1/2"NPT Female, standard 3/4"NPT Female M20 x P1.5 Female
<b>TEMPERATURE LIMIT</b>	-30 ~ 205 °C

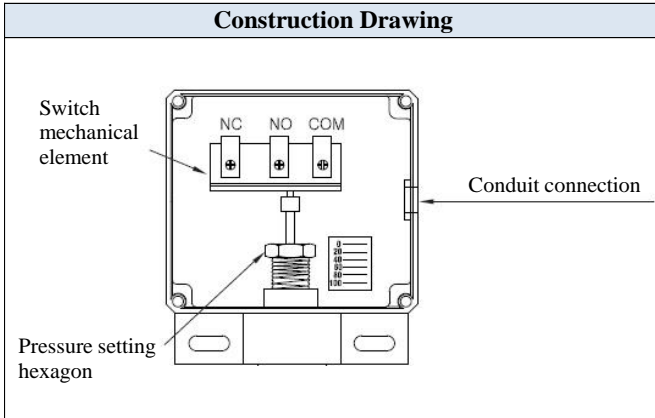
CODE	ADJUSTABLE RANGE	DEAD BAND	MAX. PRESSURE PROOF
04R	2 ~ 12 psig	0.2 ~ 0.4	1000 psig
10R	2 ~ 16 psig	0.2 ~ 0.5	1000 psig
20R	2 ~ 20 psig	0.3 ~ 0.6	1000 psig
30R	3 ~ 28 psig	0.3 ~ 0.8	1000 psig
40R	7 ~ 100 psig	0.7 ~ 2.0	1000 psig

**DIMENSION (mm)**

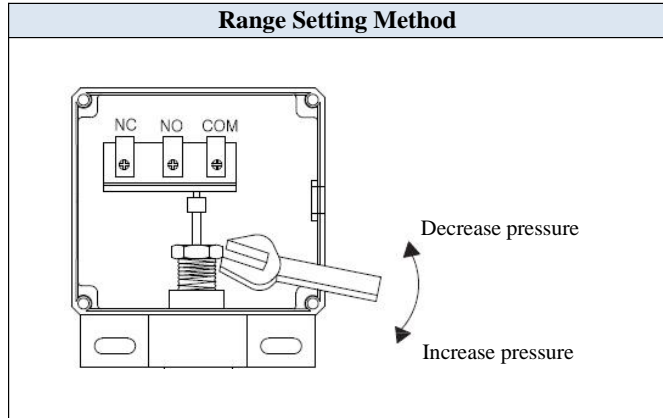
※ 제품의 사양에 따라 변경 될 수 있습니다



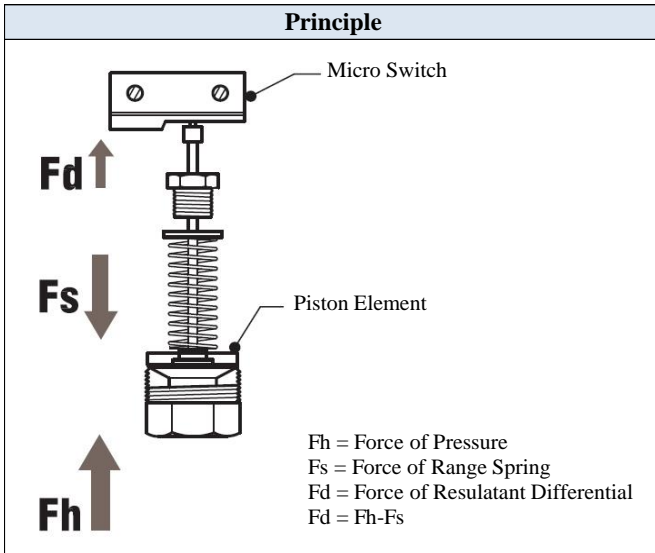
### Construction Drawing



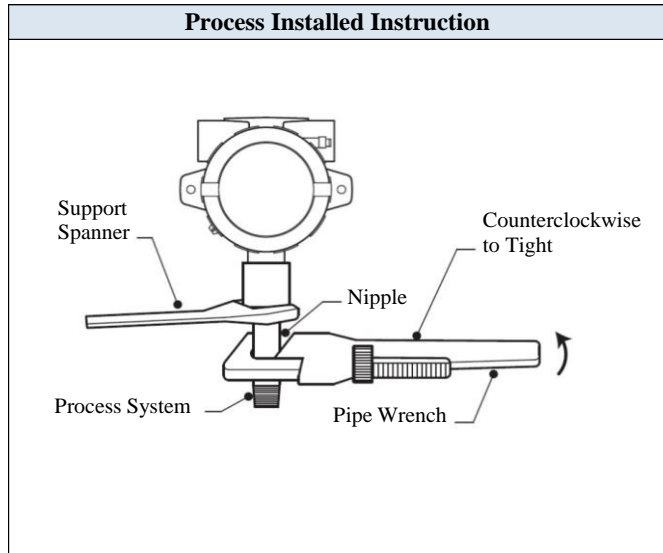
### Range Setting Method



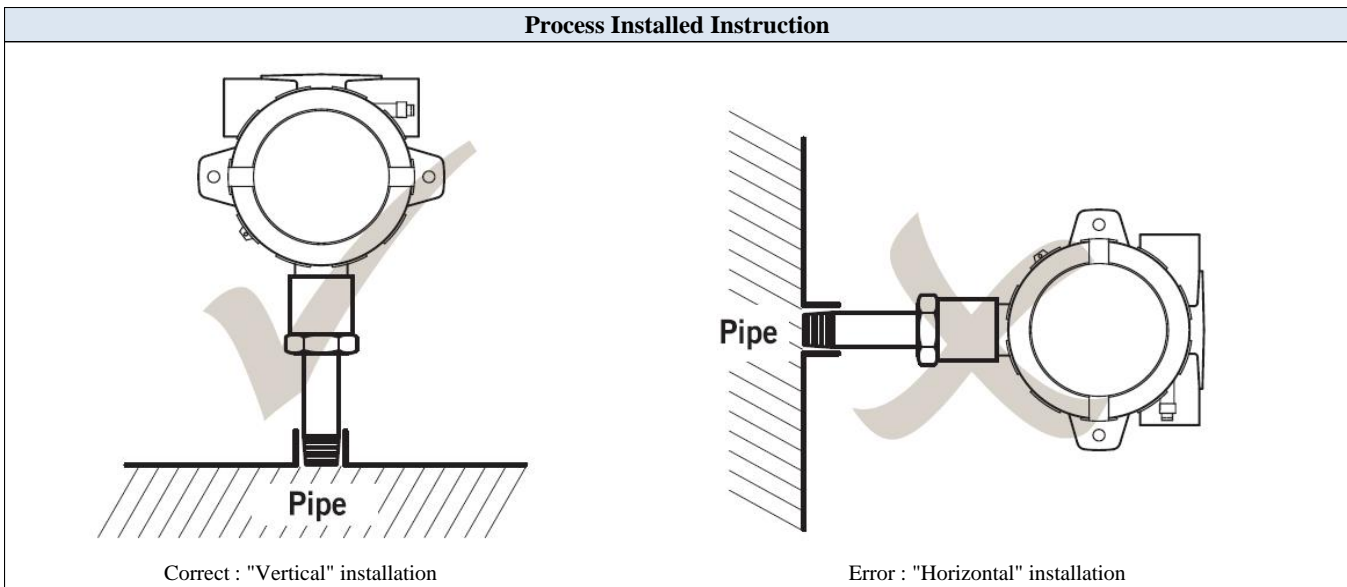
### Principle



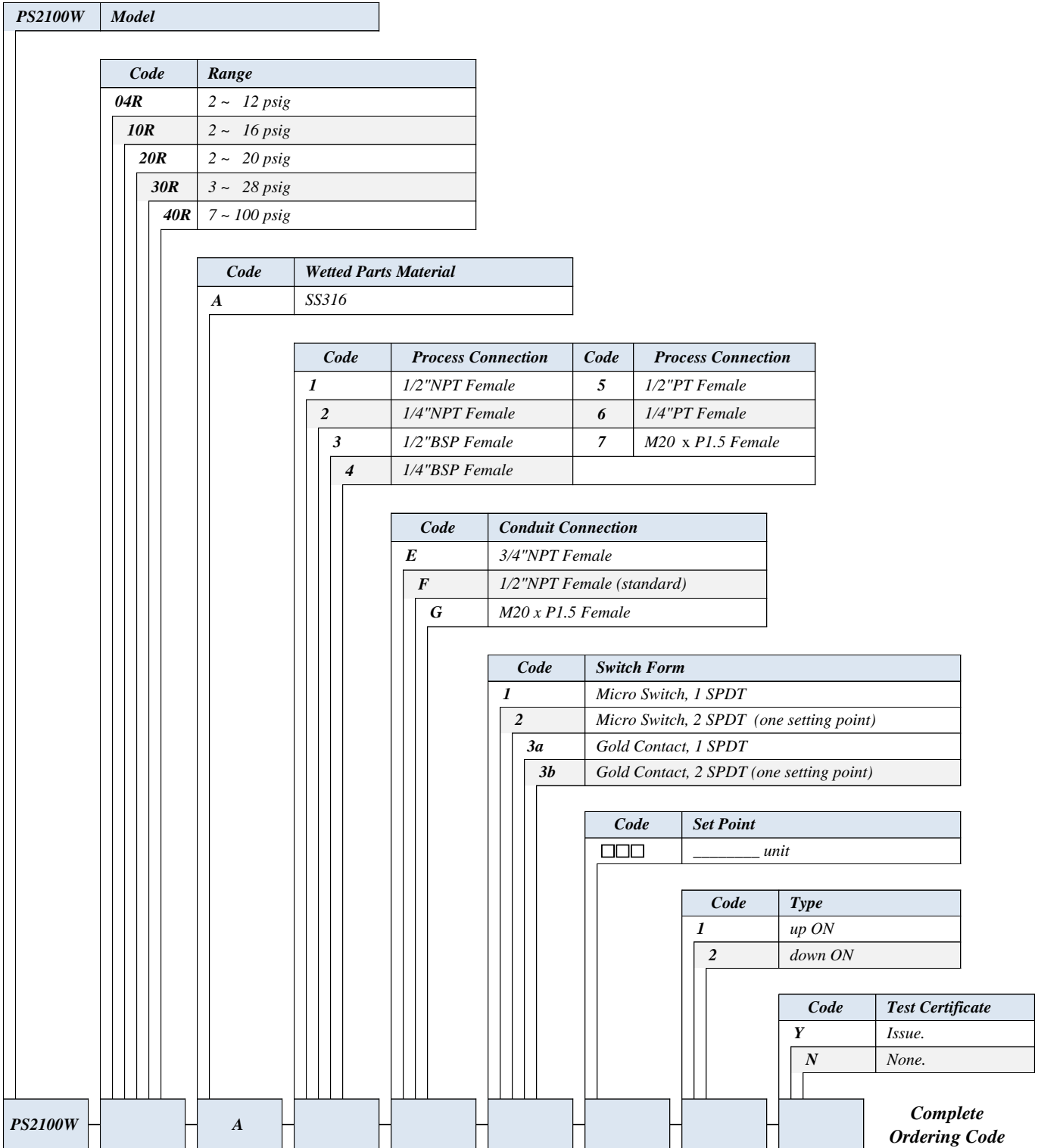
### Process Installed Instruction



### Process Installed Instruction



## Ordering Information



| FLOW | | PRESSURE | | TEMPERATURE | | AC | | DC | | BATTERY | | OUTPUT | | CONTACT | | DISPLAY |